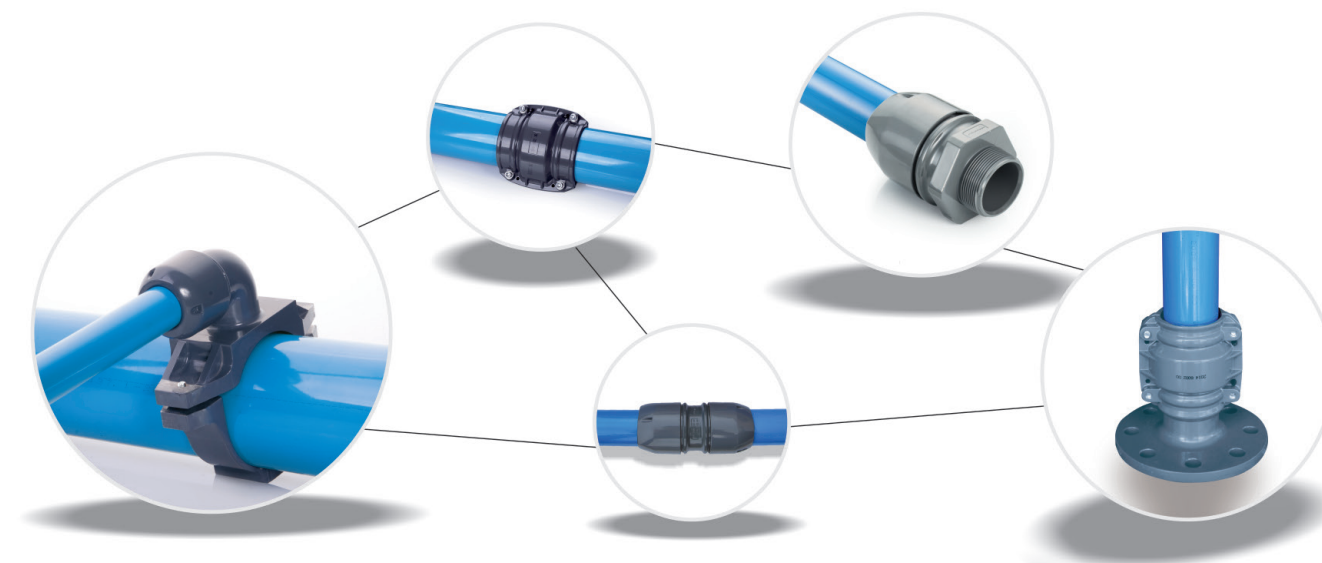




CATALOGUE & INSTALLATION GUIDE



www.airpipe.com.cn

ZHEJIANG COMPRESSED FLUID TRANSMISSION ENGINEERING CO.,LTD

Email: info@airpipe.com.cn

Tel: +86-574-8791 6595/8791 6596

Fax: +86-574-8788 5151

Version:SEP.2014



FULL PERFORMANCE COMPRESSED AIR PIPE SYSTEM



Mature Technology Perfect Quality

The compressed air pipe system plays an important role in the entire line of the production. AIRPIPE System adopts the unique technology, providing the high quality compressed air under the suitable pressure environment, reducing the energy cost for the client. The spare parts for AIRPIPE system are more flexible for installation and can meet different design and production requirements for different customers.



Super Flexibility

AIRPIPE spare parts can be dismantled and used repeatedly, which can adapt to the changing environment. Shunt device and branch pipelines can be added quickly at any time, which can adapt to the adjustment of the production line. The header slopes in the direction of the airflow towards to low point so that the condensed water can be removed from pipe system.



Corrosion-Resistant Low Pressure Drop

High quality and smooth inner surface will never rust. It ensures a stable flow of compressed air and guarantees the safety at the point of use. The high performance of "O" sealing ring ensures excellent seal and no leakage. Fin guide design and the low friction inner surface eliminate the airflow restriction, reducing the pressure drop as much as possible. Full volume flow reduces the pressure drop efficiently.



Technological Innovation Of Valve

Full volume design makes AIRPIPE energy saving and quick for installation.



Easy, Simple And Quick To Connect And Install

The pipe and the joints can be assembled quickly without any preparation. Quick assembly. No welding, agglutination or interwist is needed. No deep training is needed. Light, easy to cut pipes, easy to operate on site.



Perfect Compatibility

AIRPIPE can connect perfectly to the female thread, male thread and flange joints.



Strong, Long Life And Beautiful

The material and construction design of AIRPIPE make itself possess the capability to resist corrosion, vibration, hot temperature and any harsh environment. Therefore the air quality is preserved throughout the whole network up to the point of use, protecting the downstream equipment and the manufacturing process.

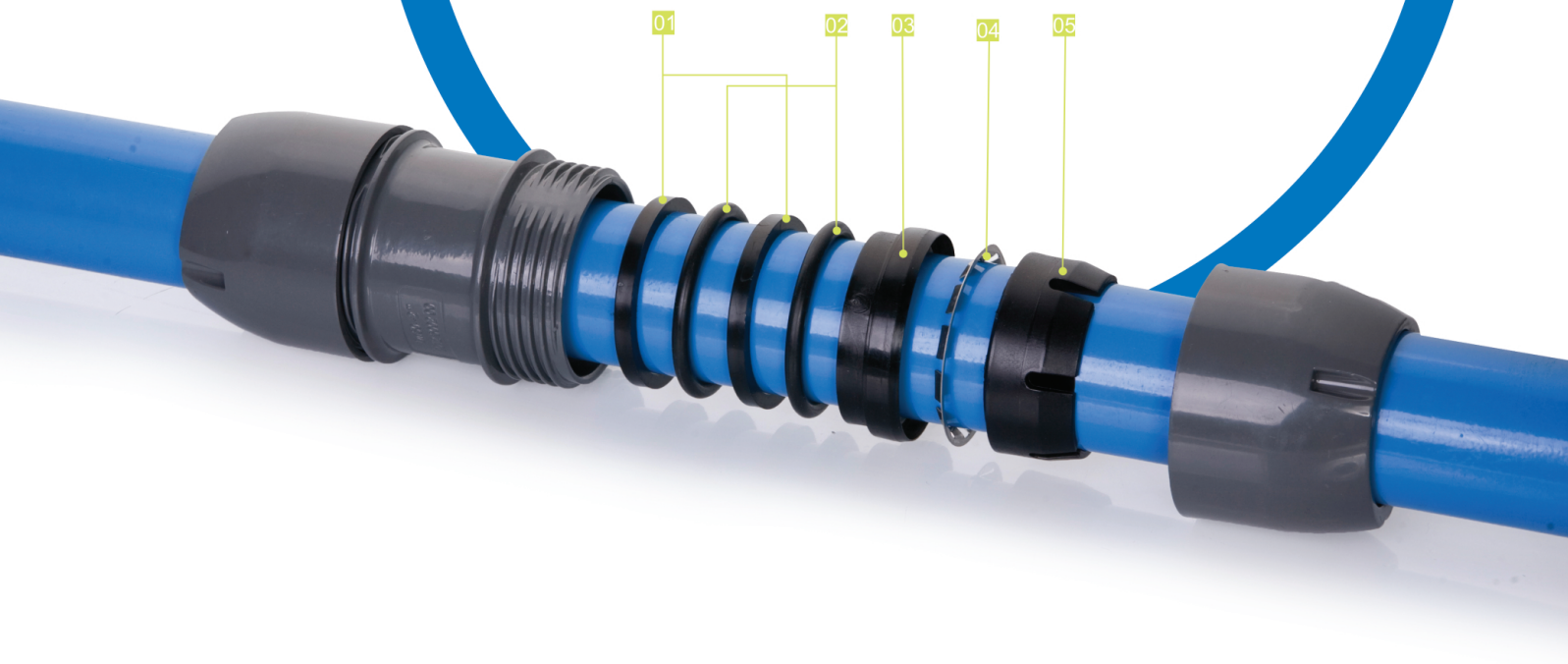
AIRPIPE

10 year's quality guarantee

In correspondence with the high performance of AIRPIPE products, we give our customer 10 years' quality guarantee. We promise to give the compensation if there are any material defect for the AIRPIPE aluminum pipes and fittings.

10 years Guarantee Terms:

- Only for original pipes and fittings. Any installation should follow the instruction book.
- All AIRPIPE products should be used under the limitation condition.
- The location of piping system should avoid striking, vibration and corrosion.
- The damaged parts and the working site situation should be verified and checked before compensating.
- The guarantee is only suitable for replacement of AIRPIPE parts.
- According to the standard requirement, the compensating claim should be submitted to the AIRPIPE CLIENT CENTER or authorized dealers.
- The ten-year guarantee is only to provide the new AIRPIPE parts for compensating if there are faults of materials and the faults should be confirmed by AIRPIPE.



CONTENT

- 06. Hose
- 07. Rigid Aluminum Pipe
- 09. Connector
- 15. Quick Drop
- 17. Valve
- 19. Flange
- 21. Fixture Accessories
- 29. Tools
- 33. Important Installation Guide



2009 5417 00

The 1st number to the 4th number is set to differentiate the future series products.

The 9th to the 10th number is set to differentiate the future logistics packaging.

The 5th number is the inlet size

0 for<DN20 1 for DN20 2 for DN25 4 for DN40 5 for DN50 6 for DN63 7 for DN80
8 for DN100 9 for DN150 A for DN200

As the above example 2009 5417 00,the 5th number is 5, that means the inlet size is DN50.

The 6th number is the outlet size

0 for<DN20 1 for DN20 2 for DN25 3 for 1"1/4' 4 for DN40 5 for DN50 6 for DN63
7 for DN80 8 for DN100 9 for DN150 A for DN200

As the above example 2009 5417 00,the 6th number is 4, that means the outlet size is DN40.

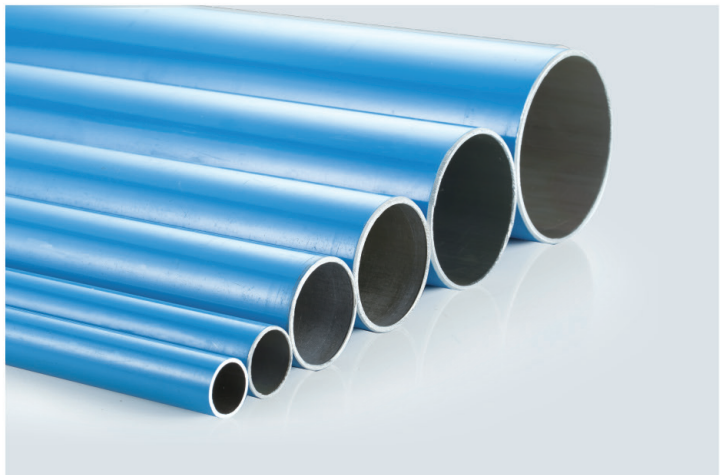
The 7th and 8th is the AIRPIPE series

00 6m Aluminum Pipe 01 S Bend 02 Pipe To Pipe Joint 03 90° Elbow 04 45° Elbow 05 Equal Tee
06 End Cap 63 3m Aluminum Pipe 07 Reducing Tee 10 Quick Drop 11 Threaded Quick Drop 17 Male Threaded Nipple Socket
19 Female Threaded Nipple Socket 21 Reducing Pipe To Pipe Joint 23 Wall Mounted Joint 22/27 Tube Clip/Gasket
28/29/40/45 Tools 30-39/50 Installation Accessories 51 Quick Valve 55 High Pressure Hose 60 Spare Parts For The Connector
70 Flange 73 Copper Valve

As the above example 2009 5417 00, the 7th and the 8th number is 17 , that means the product is male threaded aluminum joint.

In order to make your investment the best return,we provide a large range of diameters designed to perfectly fit your system so that the piping system can keep at lowest pressure drop.

PRODUCTS

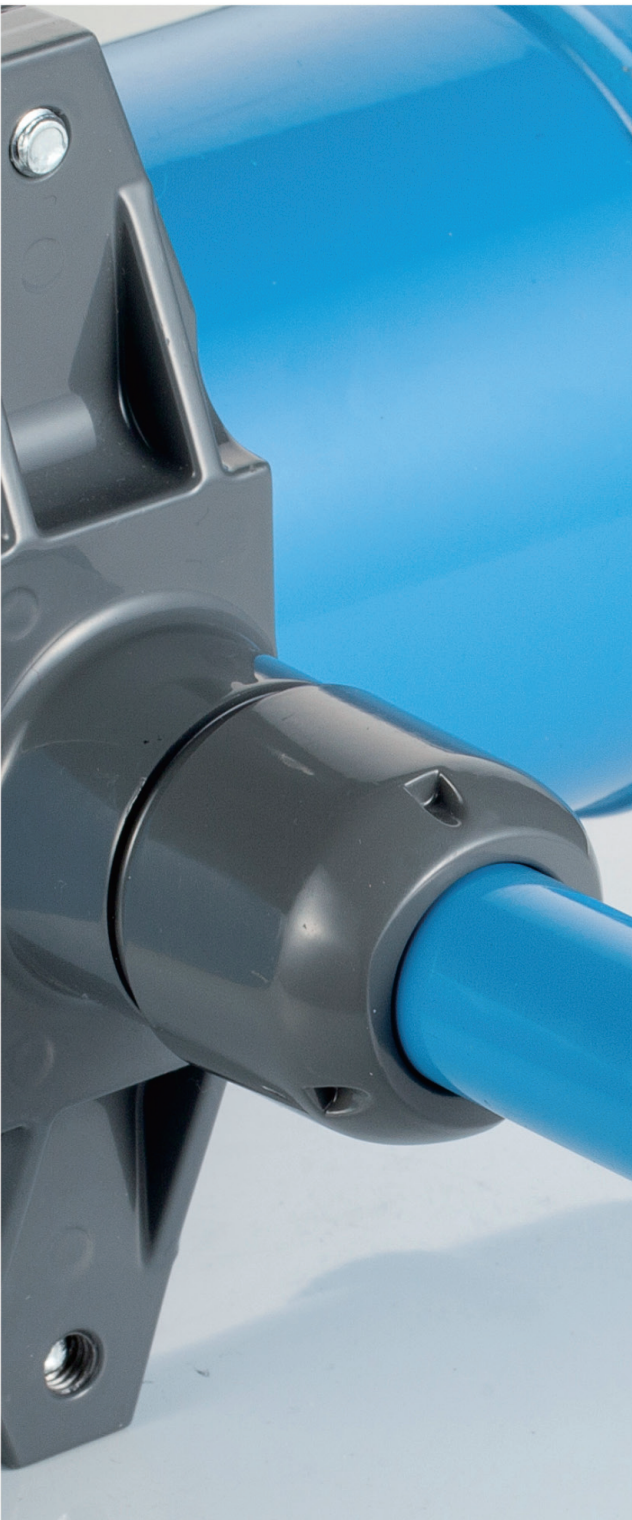


AIRPIPE	20mm 3/4"	25mm 1"	40mm 1 1/2"	50mm 2"	63mm 2 1/2"	80mm 3"	100mm 4"	150mm 6"	200mm 8"
Blue Aluminum Pipe (3m/6m)	•	•	•	•	•	•	•	•	•
S Bend	•	•							
Tube Clip	•	•	•	•	•	•	•	•	•
Gasket	•	•	•	•	•				

PRODUCTS



AIRPIPE	20mm 3/4"	25mm 1"	40mm 1 1/2"	50mm 2"	63mm 2 1/2"	80mm 3"	100mm 4"	150mm 6"	200mm 8"
Equal Aluminum Socket(Male Thread)	•	•	•	•	•	•			
Reducing Aluminum Socket(Male Thread)	•	•	•	•	•	•			
Equal Aluminum Socket (Female Thread)	•	•	•	•	•				
Equal Aluminum Socket With Flange					•	•	•	•	•
Reducing Aluminum Socket With Flange					•	•	•	•	•



AIRPIPE Technical Specifications.

AIRPIPE Flexible Hose



PRODUCTS



- Compressor outlets (absorption of vibration).
- To bypass obstacles and join to different levels.
- To admit the expansion and contraction of the aluminum pipe.
- Max. working pressure for the flexible hose used for compressed air:13bar from -20℃ to +70℃.
- Vacuum:98.7%(13mbar absolute pressure).
- Working temperature: -20℃ to +70℃.
- Resistant to mineral and synthetic compressor oils.

High Pressure Hose



AIRPIPE 管接头	φ20mm 3/4"	φ25mm 1"	φ40mm 1 1/2"	φ50mm 2"	φ63mm 2 1/2"	φ80mm 3"	φ100mm 4"	φ150mm 6"	φ200mm 8"
Equal Socket	•	•	•	•	•	•	•	•	•
Reduction Socket		•	•	•	•	•	•	•	•
90° Elbow	•	•	•	•	•	•	•	•	•
Equal Tee	•	•	•	•	•	•	•	•	•
Reducing Tee		•	•	•	•	•	•	•	•
Quick Drop		•	•	•	•	•	•	•	•
Threaded Quick Drop		•	•	•	•	•	•	•	•
Valve	•	•	•	•	•	•	•	•	•

AIRPIPE Technical Data

Working Temperature: -20 ℃ to +70 ℃
Maximum Working Pressue: 13bar
Vacuum:0.13bar (ab)
Compatible with any compressor oil
Fireproof
Suitable for open-air installation

Standards Compliance

Seamless Aluminum Alloy Pipe

AIRPIPE	Pipe Length mm	Diameter	Connection
2009 1055 00	1000	DN20	AIRPIPE quick push-in
2009 2055 00	1000	DN25	AIRPIPE quick push-in
2009 4055 00	500	DN40	AIRPIPE quick push-in
2009 4155 00	1200	DN40	AIRPIPE quick push-in
2099 5055 00	500	DN50	AIRPIPE quick push-in
2009 5155 00	1200	DN50	AIRPIPE quick push-in
2014 6055 00	500	DN63	AIRPIPE quick push-in

AIRPIPE	Pipe Length mm	Diameter	Connection
2014 6155 00	1200	DN63	AIRPIPE quick push-in
2014 7055 00	500	DN80	AIRPIPE quick push-in
2014 7155 00	1200	DN80	AIRPIPE quick push-in
2009 8055 00	800	DN100	AIRPIPE quick push-in
2014 8155 00	2000	DN100	AIRPIPE quick push-in
2009 9055 00	900	DN150	AIRPIPE quick push-in
2012 A055 00	1400	DN200	AIRPIPE quick push-in

*Two 2012 6002/7002 00,2009 8002/9002 00,2012 A002 00 pipe to pipe joints are needed for the DN63-DN200 hoses.

PS: The use of high pressure hose, please refer to P45/P46

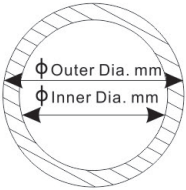
AIRPIPE Rigid Aluminum Pipe.

- Suitable Fluids: Compressed air, vacuum, nitrogen, argon
 - Max. working pressure: 13bar in the temperature environment of -20 ℃ to +70 ℃ (-30℃ to +80 ℃)
 - Vacuum: 0.13bar absolute pressure
 - Extruded aluminum pipe(confirms to GB/T4437.1-2000 standards)
- Clean air
 - Optimum flow rate performance
 - Light
 - High quality coat of the outside surface



■ Full performance compressed air pipe system has been tested and verified to ensure the safety and no leakage after installation. But the connection should be AIRPIPPE and its fittings only.

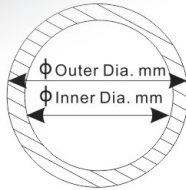
Blue Anodized Aluminum Pipe



AIRPIPE	Outer Diameter mm	Inner Diameter mm	Pipe Length m
2009 1000 00	20.1	17.5	6.0
2009 1063 00	20.1	17.5	3.0
2009 2000 00	25.1	22.5	6.0
2009 2063 00	25.1	22.5	3.0
2009 4000 00	40.1	36.5	6.0
2009 4063 00	40.1	36.5	3.0
2009 5000 00	50.1	45.7	6.0
2009 5063 00	50.1	45.7	3.0

AIRPIPE	Outer Diameter mm	Inner Diameter mm	Pipe Length m
2014 6000 00	67.6	63.0	6.0
2014 6063 00	67.6	63.0	3.0
2014 7000 00	84.6	80.0	6.0
2014 7063 00	84.6	80.0	3.0
2009 8000 00	101.8	96.8	6.0
2009 8063 00	101.8	96.8	3.0
2009 9000 00	153.0	147.5	6.0
2009 9063 00	153.0	147.5	3.0
2009 A000 00	205.0	198.6	6.0
2009 A063 00	205.0	198.6	3.0

Grey Anodized Aluminum Pipe

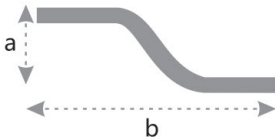
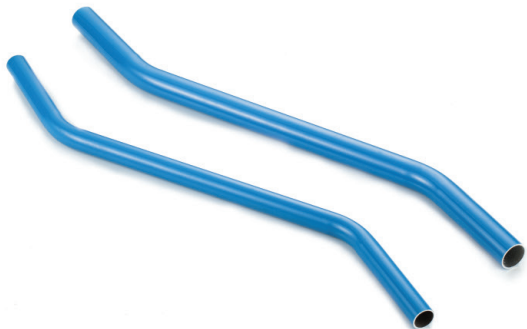


AIRPIPE	Outer Diameter mm	Inner Diameter mm	Pipe Length m
2009 1062 00	20.1	17.5	6.0
2009 1064 00	20.1	17.5	3.0
2009 2062 00	25.1	22.5	6.0
2009 2064 00	25.1	22.5	3.0
2009 4062 00	40.1	36.5	6.0
2009 4064 00	40.1	36.5	3.0
2009 5062 00	50.1	45.7	6.0
2009 5064 00	50.1	45.7	3.0

AIRPIPE	Outer Diameter mm	Inner Diameter mm	Pipe Length m
2014 6062 00	67.6	63.0	6.0
2014 6064 00	67.6	63.0	3.0
2014 7062 00	84.6	80.0	6.0
2014 7064 00	84.6	80.0	3.0
2009 8062 00	101.8	96.8	6.0
2009 8064 00	101.8	96.8	3.0
2009 9062 00	153.0	147.5	6.0
2009 9064 00	153.0	147.5	3.0
2009 A062 00	205.0	198.6	6.0
2009 A064 00	205.0	198.6	3.0

*Please confirm with us before you place order for this grey pipe.

S Bend

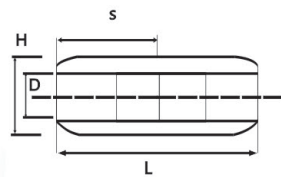


AIRPIPE	D	a	b
2009 1001 00	20	170	500
2009 2001 00	25	120	500

*S bend is often used to fix drop legs closer to the wall when the main ring is installed further away from the wall.

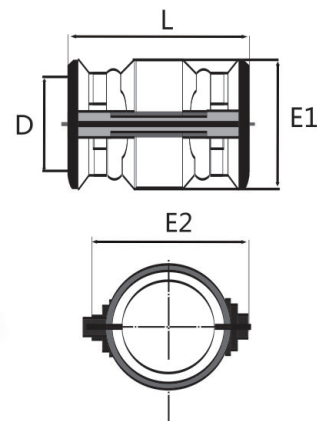
- AIRPIPE provides various connectors to break the limitation of the conventional pipe and fittings in the construction structure.
- Quick connecting.
- Full volume flow design.
- To be able to dismantle, reassemble and reuse.
- Non-flammable materials.
- The whole piping can keep the same flow diameter.

Aluminum Pipe To Pipe Connector



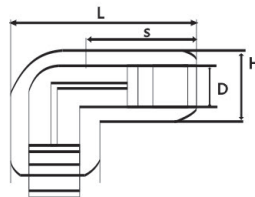
AIRPIPE	D	L	H	S
2012 1002 00	20	102	36	49
2012 2002 00	25	125	45	62
2012 4002 00	40	199	72	98
2012 5002 00	50	227	89	111

Aluminum Pipe To Pipe Connector



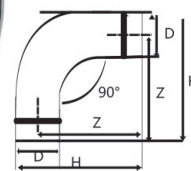
AIRPIPE	D	L	E1	E2
2014 6002 00	67	114	98	121
2014 7002 00	84	114	115	137
2009 8002 00	100	146	128	157
2009 9002 00	150	198	180	210
2012 A002 00	200	198	240	250

Aluminum 90° Elbow



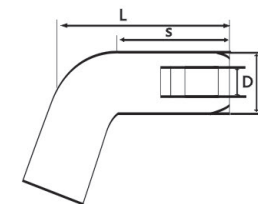
AIRPIPE	D	L	H	S
2009 1003 00	20	82	36	49
2009 2003 00	25	100	45	62
2009 4003 00	40	160	72	98
2009 5003 00	50	188	89	111

Aluminum 90° Elbow



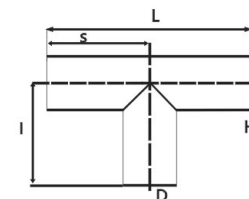
AIRPIPE	D	H	Z
2014 6003 00	67	142.5	105
2014 7003 00	84	156.2	110
2009 8003 00	100	210	221
2009 9003 00	150	265	315
2009 A003 00	200	315	405

Aluminum 45° Elbow



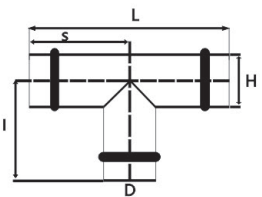
AIRPIPE	D	L	H	S
2012 1004 00	20	110	36	49
2012 2004 00	25	123	45	62
2012 4004 00	40	165	72	98
2012 5004 00	50	182	89	111

Aluminum Equal Tee



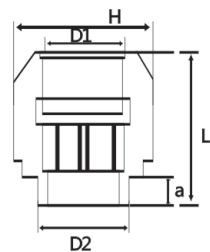
AIRPIPE	D	L	I	H	S
2012 1005 00	20	127	82	36	49
2012 2005 00	25	155	100	45	62
2012 4005 00	40	249	180	72	98
2012 5005 00	50	286	205	89	111

Aluminum Equal Tee



AIRPIPE	D	L	I	H	S
2014 6005 00	67	200	100	75	100
2014 7005 00	84	220	110	92.4	100
2009 8005 00	100	265	135	101	155
2009 9005 00	150	332	157	153	166
2012 A005 00	200	375	212	205	188

Aluminum Nipple Socket(Male Thread)



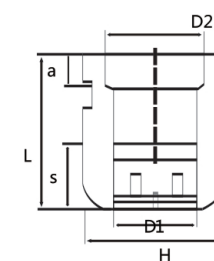
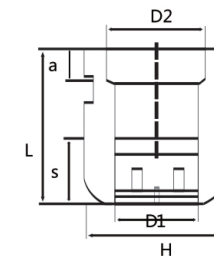
Aluminum Nipple Socket (BSP Male Thread)

AIRPIPE	D1	D2	L	H	a
2009 1017 00	20	1/2"	69	36	15
2009 1117 00	20	3/4"	71	36	17
2009 2117 00	25	3/4"	82	45	17
2009 2217 00	25	1"	85	45	20
2012 4217 00	40	1"	124	72	22
2012 4317 00	40	1 1/4"	124	72	22
2012 4417 00	40	1 1/2"	124	72	22
2012 5417 00	50	1 1/2"	140	89	22
2012 5517 00	50	2"	144	89	26

Aluminum Nipple Socket (NPT Male Thread)

AIRPIPE	D1	D2	L	H	a
2009 1018 00	20	1/2"	69	36	15
2009 1118 00	20	3/4"	71	36	17
2009 2118 00	25	3/4"	82	45	17
2009 2218 00	25	1"	85	45	20
2012 4218 00	40	1"	124	72	22
2012 4318 00	40	1 1/4"	124	72	22
2012 4418 00	40	1 1/2"	124	72	22
2012 5418 00	50	1 1/2"	140	89	22
2012 5518 00	50	2"	144	89	26

Aluminum Nipple Socket(Female Thread)



Aluminum Nipple Socket(BSP Female Thread)

AIRPIPE	D1	D2	L	H	S	a
2009 1119 00	20	3/4"	71	36	49	20
2009 2219 00	25	1"	85	45	62	22
2012 4419 00	40	1 1/2"	124	72	98	25
2012 5519 00	50	2"	141	89	111	28
2014 6619 00	67	2 1/2"	98.5	85.8	96.6	30

Aluminum Nipple Socket(NPT Female Thread)

AIRPIPE	D1	D2	L	H	S	a
2009 1128 00	20	3/4"	71	36	49	20
2009 2228 00	25	1"	85	45	62	22
2012 4428 00	40	1 1/2"	124	72	98	25
2012 5528 00	50	2"	141	89	111	28
2014 6628 00	67	2 1/2"	98.5	85.8	96.6	30

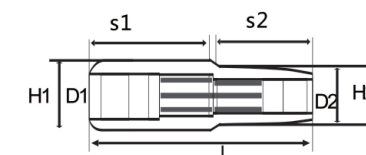
Aluminum Nipple Socket(BSP Female Thread)

AIRPIPE	D1	D2	L	H1	H2	a
2014 7719 00	84	3"	100	107	107	30

Aluminum Nipple Socket(NPT Female Thread)

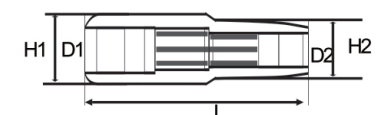
AIRPIPE	D1	D2	L	H1	H2	a
2014 7720 00	84	3"	100	107	107	30

Aluminum Reducing Pipe To Pipe Joint



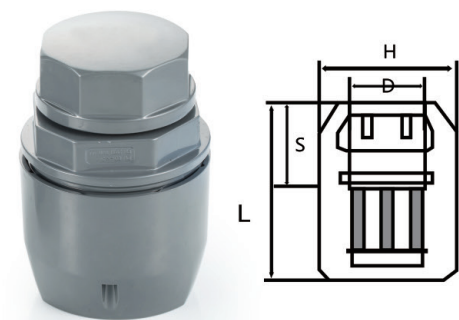
AIRPIPE	D1	D2	L	H1	S1	H2	S2
2012 2121 00	25	20	102	43	44	36	33
2012 4221 00	40	25	122	62	70	43	48
2012 5421 00	50	40	160	76	88	62	65

Aluminum Reducing Pipe To Pipe Joint



AIRPIPE	D1	D2	L	H1	H2
2014 6521 00	67	50	125.5	75	76
2014 7521 00	84	50	155	92.4	75
2014 7621 00	84	67	124	92.4	75
2014 8621 00	100	67	182	89	101
2014 8721 00	100	84	153.7	108.8	107.1
2014 9721 00	150	84	153.7	159.6	107.1
2012 9821 00	150	100	174	153	101
2012 A921 00	200	150	170	212	160

Aluminum End Cap



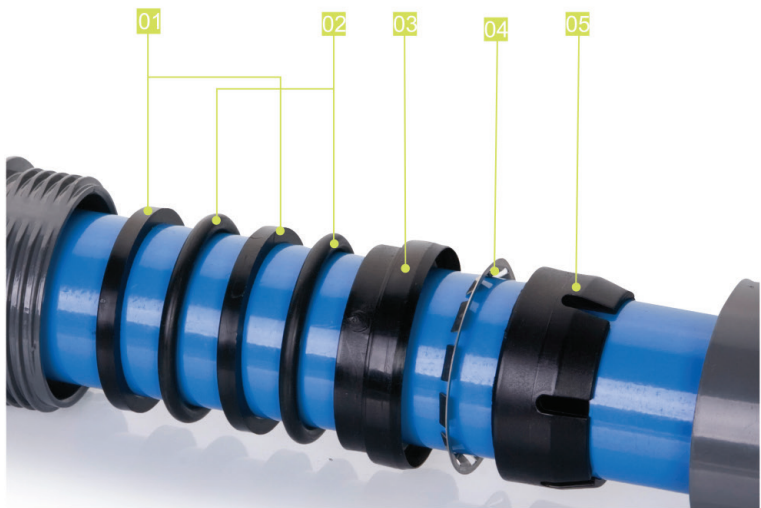
AIRPIPE	D1	D2	L	H1
2012 1006 00	20	59	36	36
2012 2006 00	25	62	45	45
2012 4006 00	40	78	72	72
2012 5006 00	50	90	89	89

Aluminum End Cap



AIRPIPE	D1	L
2014 6006 00	67	75
2014 7006 00	84	92.4
2012 8006 00	100	70
2012 9006 00	150	70
2009 A006 00	200	70

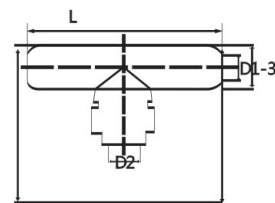
Spare Parts For Connector



AIRPIPE	D1
2009 1060 00	20
2009 2060 00	25
2009 4060 00	40
2009 5060 00	50

* E. g: The code 2009 5060 00 is the sealing spare parts for DN50 connector (Including Seal liner, Seal ring, Inner liner, Gripping teeth, and Clamping plate.)

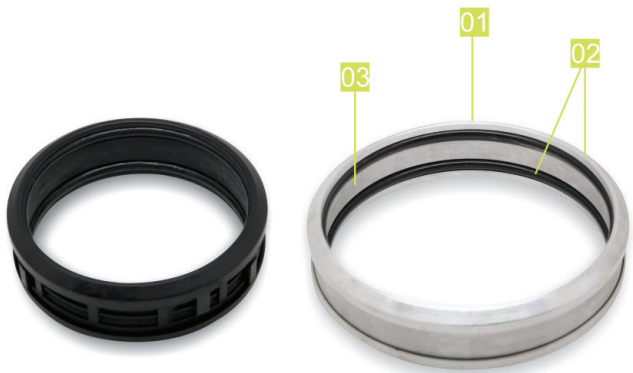
Reducing Tee



AIRPIPE	D1-3	D2	L
2012 2107 00	25	20	193
2012 4207 00	40	20	155
2012 5407 00	50	40	128
2014 6407 00	67	40	200
2014 6507 00	67	50	200
2014 7407 00	84	40	210
2014 7507 00	84	50	210
2014 7607 00	84	67	210
2009 8407 00	100	40	249
2009 8507 00	100	50	249
2014 8607 00	100	67	249
2014 8707 00	100	84	249

AIRPIPE	D1-3	D2	L
2009 9407 00	150	40	258
2009 9507 00	150	50	258
2014 9607 00	150	67	258
2014 9707 00	150	84	258
2009 9807 00	150	100	275
2012 A407 00	200	40	258
2009 A507 00	200	50	258
2014 A607 00	200	67	258
2014 A707 00	200	84	258
2009 A807 00	200	100	275
2012 A907 00	200	150	350

Spare Parts For Connector

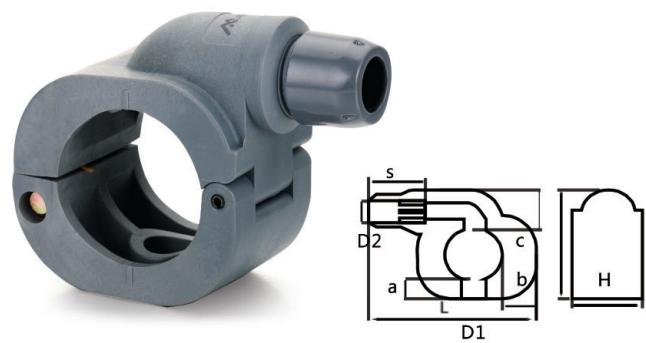


AIRPIPE	D1
2014 6060 00	67
2014 7060 00	84
2009 8060 00	100
2009 9060 00	150
2009 A060 00	200

* E. g: The code 2014 6060 00 is the sealing spare parts for DN50 connector (Including Seal liner, Seal ring, Inner liner, Gripping teeth, and Clamping plate.)

- The new generation quick drop can be used horizontally or vertically, connecting to a rigid pipe or a hose.
- Big volume.
- The complete water trap ensures the water will not enter the downstream branch.
- It can be installed quickly.No need to cut the pipes.

Polymer Quick Drop

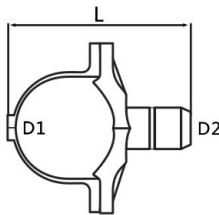


Polymer Quick Drop

AIRPIPE	D1	D2	L	H	a	b	c	s
2009 2110 00	25	1/2"	106	52	13	24	22	49
2009 4110 00	40	1/2"	121	52	8	22	22	49
2009 4210 00	40	3/4"	125	52	8	22	22	62
2009 5110 00	50	1/2"	147	62	19	20	42	49
2009 5210 00	50	3/4"	151	62	19	20	42	62

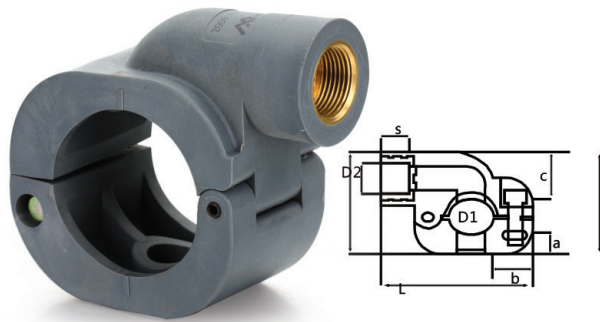
*Use AIRPIPE drilling tools to drill on the AIRPIPE piping. Take the reference number 2009 0043 00, 2009 0143 00 and 2009 0243 00 to choose the suitable drilling tool and drilling jig.

Aluminum Quick Drop



AIRPIPE	D1	D2	L
2014 6110 00	67	20	133
2014 6210 00	67	25	135.5
2014 7110 00	84	20	144.5
2014 7210 00	84	25	150
2014 8110 00	100	20	172
2009 8210 00	100	25	172
2009 9210 00	150	25	240
2009 A210 00	200	25	275

Polymer Quick Drop(Female Threaded)



Polymer Quick Drop(BSP Female Threaded)

AIRPIPE	D1	D2	L	H	a	b	c	s
2009 2011 00	25	1/2"	90	52	25	36	34	14
2009 4011 00	40	1/2"	102	52	28	42	52	14
2009 4111 00	40	3/4"	102	52	28	42	52	16
2009 5011 00	50	1/2"	127	62	44	55	67	14
2009 5111 00	50	3/4"	127	62	44	55	67	16

Polymer Quick Drop(NPT Female Threaded)

AIRPIPE	D1	D2	L	H	a	b	c	s
2009 2012 00	25	1/2"	90	52	25	36	34	14
2009 4012 00	40	1/2"	102	52	28	42	52	14
2009 4112 00	40	3/4"	102	52	28	42	52	16
2009 5012 00	50	1/2"	127	62	44	55	67	14
2009 5112 00	50	3/4"	127	62	44	55	67	16

Aluminum Quick Drop(Female Threaded)



Aluminum Quick Drop(BSP Female Threaded)

AIRPIPE	D1	D2	L
2014 6011 00	67	1/2"	131.5
2014 6111 00	67	3/4"	131.5
2014 7011 00	84	1/2"	146
2014 7111 00	84	3/4"	146
2014 8011 00	100	1/2"	154
2014 9011 00	150	1/2"	156

Aluminum Quick Drop(NPT Female Threaded)

AIRPIPE	D1	D2	L
2014 6011 00	67	1/2"	131.5
2014 6111 00	67	3/4"	131.5
2014 7011 00	84	1/2"	146
2014 7111 00	84	3/4"	146
2014 8011 00	100	1/2"	154
2014 9011 00	150	1/2"	156

- AIRPIPE ball valve and butterfly valve can be installed in the piping and some important position such as outlet of compressor and upstream of pneumatic tools. Good for the separation, adjustment and maintenance.

Quick Plug Valve



Quick Plug Valve (Male Thread)



- Quick Install
- Provide a range of male threaded valve to better connect the system.

AIRPIPE	D1	Material of valve	L
2014 1051 00	20	Brass	132
2014 2051 00	25	Brass	166
2014 4051 00	40	Brass	190
2014 5051 00	50	Brass	212

AIRPIPE	D1	Material of valve
2014 6051 00	67	Iron
2014 6151 00	67	Stainless Steel
2014 7051 00	84	Iron
2014 7151 00	84	Stainless Steel
2009 8051 00	100	Iron
2009 9051 00	150	Iron
2012 A051 00	200	Iron
2009 8151 00	100	Stainless Steel
2009 9151 00	150	Stainless Steel
2009 A151 00	200	Stainless Steel

*Two 2014 6002/7002 00, 2009 8002/9002 00, 2012 A002 00 pipe to pipe joints are needed to connect the DN63-DN200 valve to the pipe.

Quick Plug Valve (BSP Male Thread)

AIRPIPE	D1	D2	L
2014 1351 00	DN20	3/4"	90
2014 2351 00	DN25	1"	105
2014 4351 00	DN40	1 1/2"	148
2014 5351 00	DN50	2"	168

Quick Plug Valve (NPT Male Thread)

AIRPIPE	D1	D2	L
2014 1352 00	DN20	3/4"	90
2014 2352 00	DN25	1"	105
2014 4352 00	DN40	1 1/2"	148
2014 5352 00	DN50	2"	168

Quick Plug Valve (Female Thread)



Brass Valve



Quick Plug Valve (BSP Female Thread)

AIRPIPE	D1	D2	L
2014 1251 00	DN20	1/2"	71
2014 2251 00	DN25	1"	82
2014 4451 00	DN40	1 1/2"	143
2014 5551 00	DN50	2"	156.5

Quick Plug Valve (NPT Female Thread)

AIRPIPE	D1	D2	L
2014 1252 00	DN20	1/2"	71
2014 2252 00	DN25	1"	82
2014 4452 00	DN40	1 1/2"	143
2014 5552 00	DN50	2"	156.5

*Drill tail screw, self-tapping screw and washer are attached.

Quick Plug Valve (BSP Female Thread)

AIRPIPE	D1	D2	L
2014 1151 00	DN20	1/2"	96.5
2014 2151 00	DN25	1"	106.5

Quick Plug Valve (NPT Female Thread)

AIRPIPE	D1	D2	L
2014 1152 00	DN20	1/2"	96.5
2014 2152 00	DN25	1"	106.5

*Drill tail screw, self-tapping screw and washer are attached.

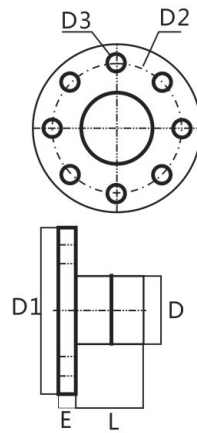
Brass valve (BSP Thread)

AIRPIPE	D1	D2	Thread
2009 0073 00	1/2"	1/2"	Female Thread
2009 0173 00	3/4"	3/4"	Female Thread
2009 1073 00	1/2"	1/2"	Male Thread
2009 1173 00	3/4"	3/4"	Male Thread
2009 0273 00	1/2"	1/2"	Male Thread To Female Thread
2009 1273 00	3/4"	3/4"	Male Thread To Female Thread
2009 2073 00	1"	1"	Female Thread
2009 4073 00	1 1/2"	1 1/2"	Female Thread
2009 5073 00	2"	2"	Female Thread

Brass valve (NPT Thread)

AIRPIPE	D1	D2	Thread
2009 0074 00	1/2"	1/2"	Female Thread
2009 0174 00	3/4"	3/4"	Female Thread
2009 1074 00	1/2"	1/2"	Male Thread
2009 1174 00	3/4"	3/4"	Male Thread
2009 0274 00	1/2"	1/2"	Male Thread To Female Thread
2009 1274 00	3/4"	3/4"	Male Thread To Female Thread
2009 2074 00	1"	1"	Female Thread
2009 4074 00	1 1/2"	1 1/2"	Female Thread
2009 5074 00	2"	2"	Female Thread

Aluminum Flange Connector



AIRPIPE	D	DN	Bolt	Hole Distance
2014 6170 00	67	DN63	M16	145
2014 7170 00	84	DN80	M16	160
2009 8170 00	100	DN100	M16	180
2009 9170 00	150	DN150	M20	240
2012 A170 00	200	DN200	M20	295

*One piece of 2014 6002/7002 00, 2009 8002/9002 00, 2012 A002 00 pipe to pipe joint is needed to connect the flange to the pipe.

Flange With Female Thread (Stainless Steel)



AIRPIPE	Flange size	Female thread size	Bolt	Hole distance
2009 2270 00	DN25	1"	M12	85
2009 4470 00	DN40	1 1/2"	M16	110
2009 5570 00	DN50	2"	M16	125
2009 6270 00	DN65	1"	M16	145
2009 6470 00	DN65	1 1/2"	M16	145
2009 6570 00	DN65	2"	M16	145
2009 7270 00	DN80	1"	M16	160
2009 7470 00	DN80	1 1/2"	M16	160
2009 7570 00	DN80	2"	M16	160
2009 8470 00	DN100	1 1/2"	M16	180
2009 8570 00	DN100	2"	M16	180
2009 9470 00	DN150	1 1/2"	M20	240
2009 9570 00	DN150	2"	M20	240
2009 9670 00	DN150	2 1/2"	M20	240
2009 9770 00	DN150	3"	M20	240

*1 piece of flange gasket and 4 pieces of flange bolts (7cm) are attached for DN25, DN40, DN50, DN63.

1 piece of flange gasket and 8 pieces of flange bolts (7cm) are attached for DN80, DN100, DN150, DN200.

Flange With Female Thread (Carbon Steel)

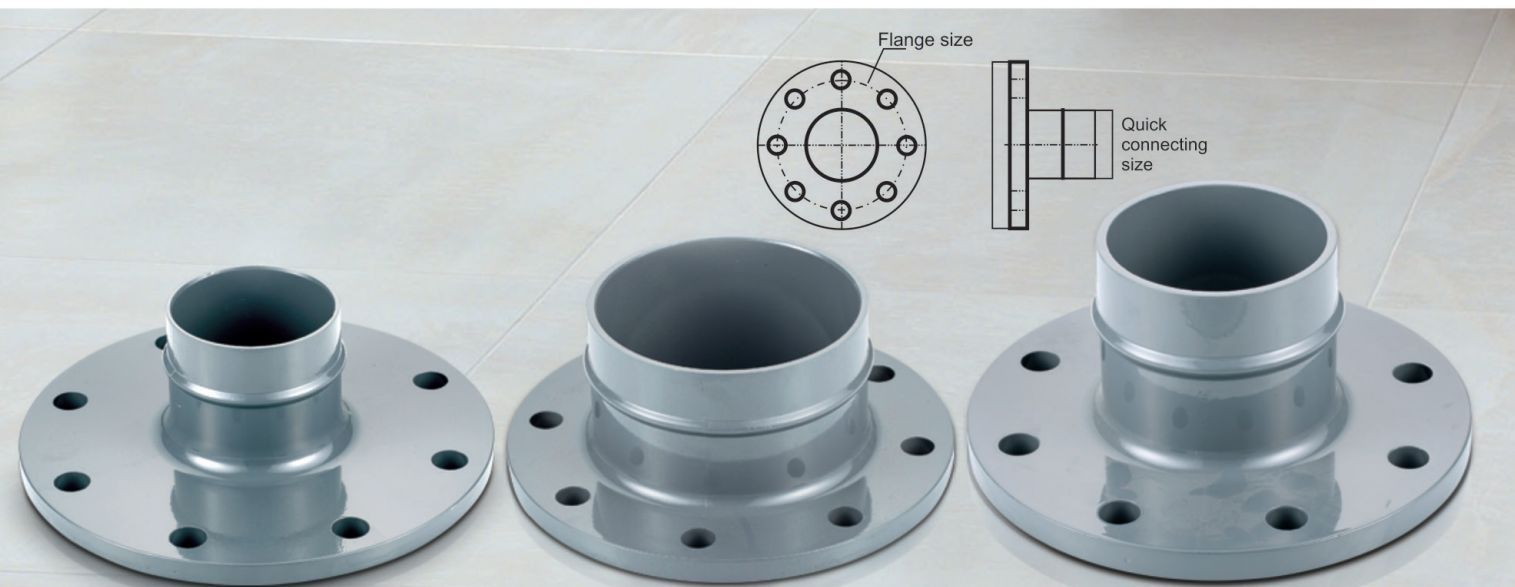


AIRPIPE	Flange size	Female thread size	Bolt	Hole distance
2009 2279 00	DN25	1"	M12	85
2009 4479 00	DN40	1 1/2"	M16	110
2009 5579 00	DN50	2"	M16	125
2009 6279 00	DN65	1"	M16	180
2009 6479 00	DN65	1 1/2"	M16	180
2009 6579 00	DN65	2"	M16	160
2009 7279 00	DN80	1"	M16	160
2009 7479 00	DN80	1 1/2"	M16	160
2009 7579 00	DN80	2"	M16	145
2009 8479 00	DN100	1 1/2"	M16	145
2009 8579 00	DN100	2"	M16	145
2009 9479 00	DN150	1 1/2"	M20	240
2009 9579 00	DN150	2"	M20	240
2009 9679 00	DN150	2 1/2"	M20	240
2009 9779 00	DN150	3"	M20	240

*1 piece of flange gasket and 4 pieces of flange bolts (7cm) are attached for DN25, DN40, DN50, DN63.

1 piece of flange gasket and 8 pieces of flange bolts (7cm) are attached for DN80, DN100, DN150, DN200.

Aluminum Reducing Coupling



AIRPIPE	Flange size	Quick connecting size	Bolt	Hole Distance
2014 6771 00	DN63	DN80	M16	145
2014 7671 00	DN80	DN63	M16	160
2009 7871 00	DN80	DN100	M16	160
2014 8671 00	DN100	DN63	M16	180
2014 8771 00	DN100	DN80	M16	180

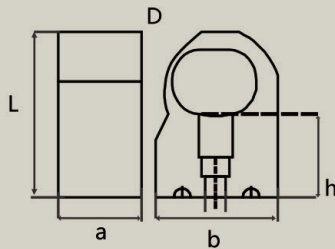
AIRPIPE	Flange size	Quick connecting size	Bolt	Hole Distance
2014 0771 00	DN125	DN80	M16	210
2009 0871 00	DN125	DN100	M16	210
2009 0971 00	DN125	DN150	M20	210
2009 9871 00	DN150	DN100	M20	240
2009 A971 00	DN200	DN150	M20	295

*8 pieces of flange bolts (7cm) and the flange gasket are attached.

*One piece of 2014 6002/7002 00, 2009 8002/9002 00, 2012 A002 00 pipe to pipe joint is needed to connect the DN63-DN200 flange to the pipe.

- Suitable for various piping structure
- Used for installing pipes on wall, roof or canals,vertically or horizontally
- Perfectly suitable for AIRPIPE SYSTEM

Fixing Clip



AIRPIPE	D	I	L	H	a	b
2009 1022 00	20	M8	56.0	30.0	30.0	31.0
2009 2022 00	25	M8	60.0	27.5	30.0	38.0
2009 4022 00	40	M8	101.0	50.0	40.0	60.0
2009 5022 00	50	M8	108.0	45.0	40.0	75.0
2014 6022 00	67	M8	118.0	38.5	40.0	94.0
2014 7022 00	84	M8	172.0	71.0	50.0	119.0
2009 8022 00	100	M8	209.0	83.0	60.0	162.0

Fixing Clip



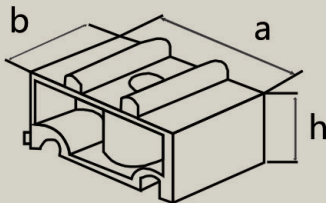
AIRPIPE	D
2009 9022 00	150
2009 A022 00	200

*2009 2350 00 for concrete wall
2009 2250/1250 00 for the steel frame
2009 0665/1465/1565 00 for the bracket and girder clamp

AIRPIPE	D	usage	standard equipped
2014 4122 00	40	is used to fix the two ends of high pressure hose	4 pieces of M10 screw nut are attached
2014 5122 00	50	is used to fix the two ends of high pressure hose	4 pieces of M10 screw nut are attached
2014 6122 00	67	is used to fix the two ends of high pressure hose	4 pieces of M10 screw nut are attached
2014 7122 00	84	is used to fix the two ends of high pressure hose	4 pieces of M10 screw nut are attached
2014 8122 00	100	is used to fix the two ends of high pressure hose	4 pieces of M10 screw nut are attached

E.g Used outdoors (Anti- UV) and compressor room (high intensive)

Pipe Clip Gasket



AIRPIPE	D	a	b
2009 0027 00	20-25	30	49
2009 0127 00	40-63	30	94

Connector



AIRPIPE	D1	D2	Material
2009 4950 00	1.5" Male thread	1" Female thread	Stainless steel
2009 5050 00	2" Male thread	1" Female thread	Stainless steel
2009 6250 00	2.5" Male thread	1" Female thread	Stainless steel
2009 6550 00	2.5" Male thread	2" Female thread	Stainless steel
2009 7250 00	3" Male thread	1" Female thread	Stainless steel
2009 5450 00	2" Male thread	Female thread	Aluminum

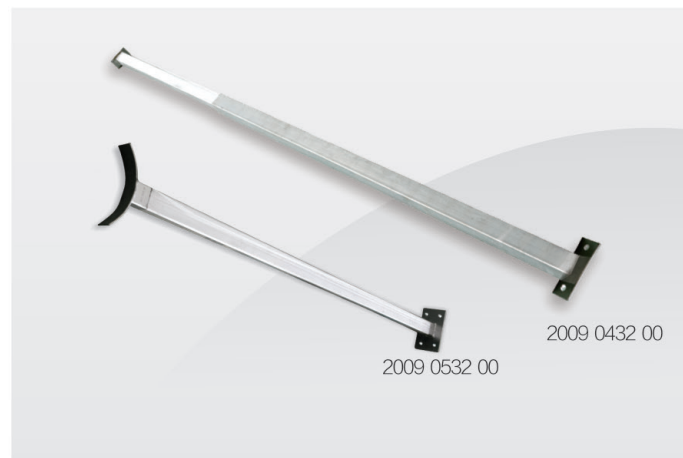
*2009 4950 00/2009 5050 00 is numbered on special cases.

Connector



AIRPIPE	D1	D2	Material
2009 8150 00	1" Male thread	3/4" Male thread	Copper
2009 8250 00	3/4" Male thread	1/2" Female thread	Copper
2009 8350 00	1/2" Female thread	1/4" Male thread	Copper
2009 8450 00	1/2" Female thread	1/4" Female thread	Copper
2009 8550 00	1" Female thread	1/2" Male thread	Copper

Adjustable Bracket



AIRPIPE	L
2009 0432 00	1200-2400
2009 0532 00	1980

*2009 0432 00 is used for fixing the threaded filter.
2009 0532 00 is used for fixing the flange filter.
Four iron expansion are attached.

Drilling Tail Screw and Plastic Expansion Screw



AIRPIPE	D	Remark
2009 1250 00	M5.5x60mm	Drilling Tail Screw
2009 2250 00	M5.5x35mm	Drilling Tail Screw
2009 2350 00	M6x80mm	Plastic Expansion Screw

Wire Rope



Wire cable

AIRPIPE	D
2009 0150 00	12

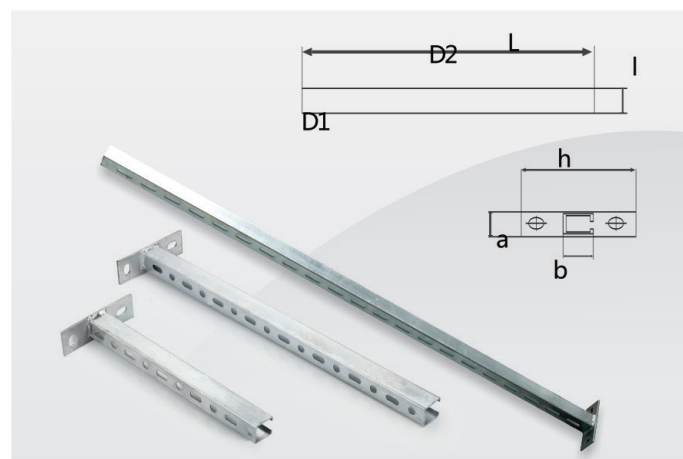
* One piece of wire rope shall be requiring 4 wire rope clamp and 2 wire rope knot tie.

Wire Rope Knot Tie

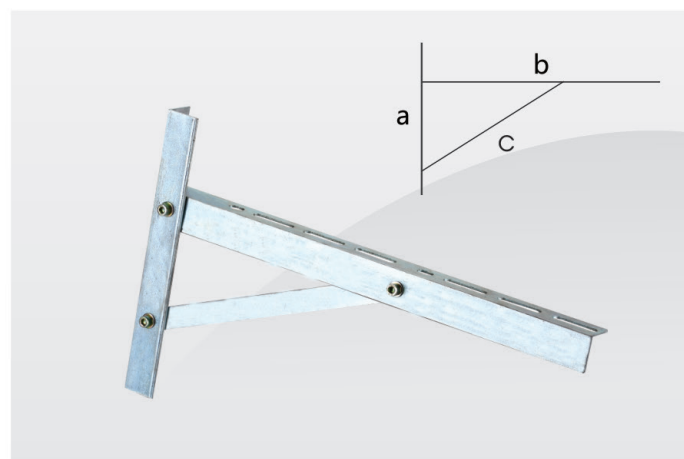


AIRPIPE	D
2009 0250 00	12

Wall Mounted Bracket



AIRPIPE	L	I	H	a	b
2009 0032 00	300	27	120	40	30
2009 0132 00	500	27	120	40	30
2009 0232 00	1200	27	120	40	30



AIRPIPE	a	b	c
2009 0632 00	300	500	310

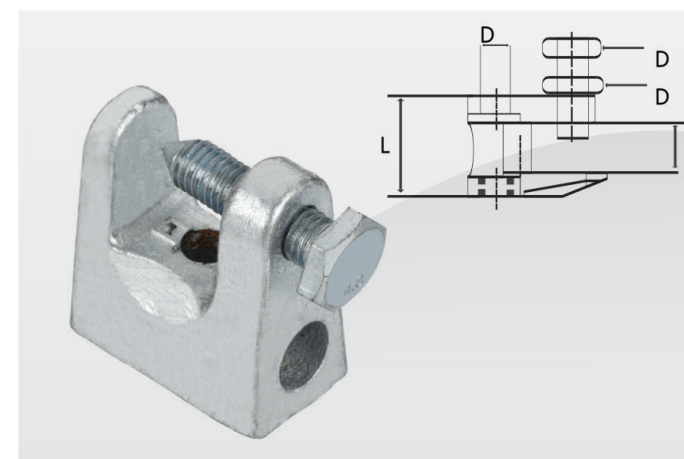
*Two iron expansions are attached.
Support the line above DN150,DN200.

Wire Rope Clamp



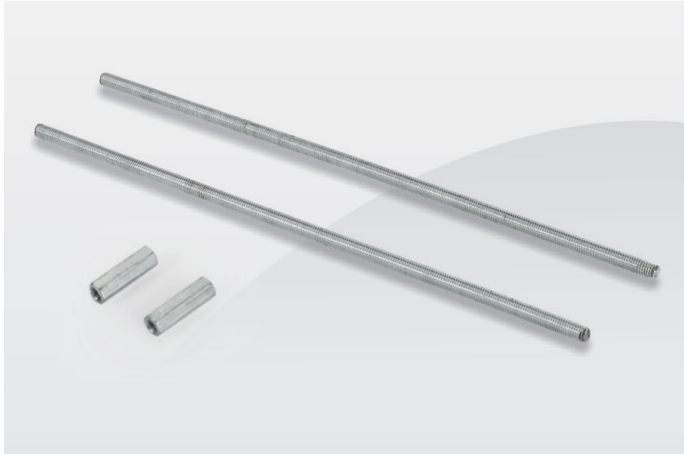
AIRPIPE	D
2009 0850 00	12

Wire Rope Knot Ties



AIRPIPE	D	L	I
2009 0433 00	M8	36	18

Threaded Steel Rod



AIRPIPE	L	D	remark
2009 1150 00	40	8	connecting buckle
2009 1750 00	3000	8	connecting rod

*Two 8mm screws are attached.

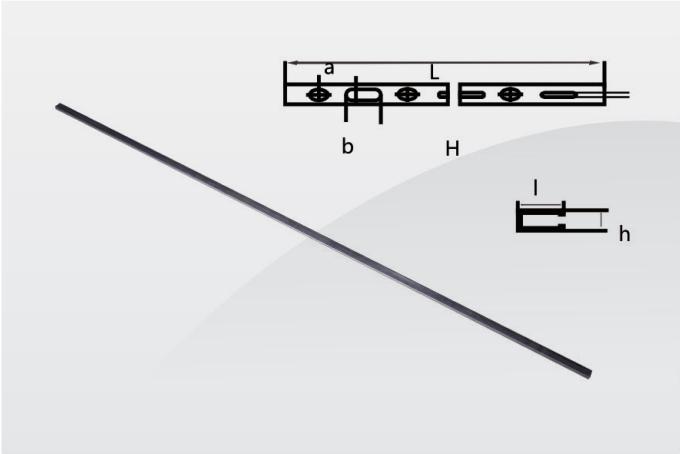
T-bolts



AIRPIPE	D	L
2009 0665 00	M8	50
2009 1465 00	M8	60
2009 1565 00	M8	70

*The washer is attached.

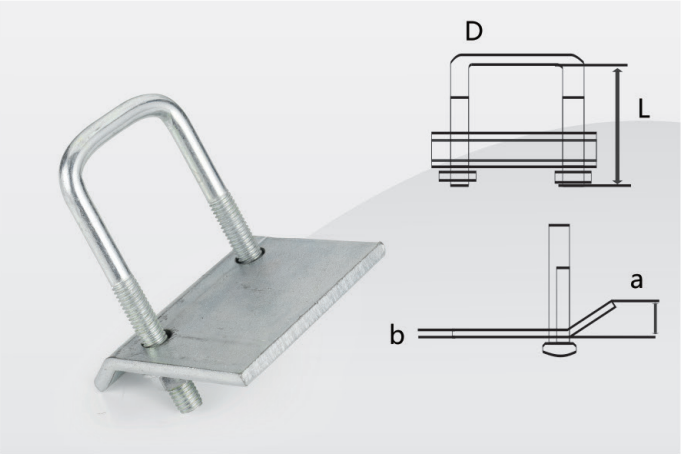
Square Steel



AIRPIPE	L	l	H	H	a	b
2009 0230 00	3000	30	27	11	24	20

*When the square steel is fixed to the concrete pillar, the iron expansion 2009 1650 00 is needed.
Tow iron expansion are attached.

Fastener



AIRPIPE	D	L	a	b
2009 0037 00	70	43	20	4

Iron Expansion



AIRPIPE	D
2009 1550 00	M8
2009 1650 00	M8*12cm

2009 1550 00 is used for fixing the wall mounted bracket.

Iron Expansion



AIRPIPE	D
2012 3750 00	12cm

*2012 3750 00 is used for fixing the threaded rope to the wal.

Beam Suspender



AIRPIPE	L	H	D1	D2
2009 0335 00	50	25	M6	M8

Universal Clamp



AIRPIPE	D
2009 0135 00	25
2009 0235 00	50

Swing Check Valve



AIRPIPE	D	Valve material	Remark
2009 4480 00	1/2" Male thread	Cast iron	Male thread nipple sockets is attached
2009 5580 00	2" Male thread	Cast iron	Male thread nipple sockets is attached
2009 6680 00	DN65 Flange	Cast iron	Thread flange, Flange bolts and flange gasket are attached

*One-way valve to prevent the air recirculation

Swing Check Valve



AIRPIPE	D	Valve material	Remark
2009 4481 00	1/2" Male thread	Stainless steel	Male thread nipple sockets is attached
2009 5581 00	2" Male thread	Stainless steel	Male thread nipple sockets is attached
2009 6681 00	DN65 Flange	Stainless steel	Thread flange, Flange bolts and flange gasket are attached

Pneumatic Fittings



AIRPIPE	D	Connection Port
2009 0183 00	1/2" Female thread	one-way connection
2009 0283 00	1/2" Female thread	two-way connection
2014 0483 00	1/2" Female thread	four -way connection

*Connector is attached

Pressure Meter



AIRPIPE	D	Remark
2009 0483 00	1/2" Female thread	Shock resistance, 0-1.6mpa, 1.6 degree, the shock absorbing pipe is attached
2009 0583 00	1/2" Female thread	Non-Shock resistance, 0-1.6mpa, 1.6 degree, the shock absorbing pipe is attached

Automatic Drain Valve



AIRPIPE	Inlet size
2014 0973 00	1/2" Femal thread

*One ball valve is needed before using this drain valve.

Electronic Drain Valve



AIRPIPE	Inlet size	Pressure
2009 0873 00	1/2" Femal thread	16bar

*One ball valve is needed before using this drain valve.

Vortex Flow Meter



AIRPIPE	D	Remark
2009 4482 00	DN40	Lithium Battery is built in. Thread flange, Male thread nipple socket, Flange bolts and flange gasket are attached
2009 5582 00	DN50	Lithium Battery is built in. Thread flange, Male thread nipple socket, flange bolts and flange gasket are attached
2014 6682 00	DN63	Lithium Battery is built in. Flange, Flange bolts and flange gasket are attached
2014 7782 00	DN80	Lithium Battery is built in. Flange, Flange bolts and flange gasket are attached
2014 8882 00	DN100	Lithium Battery is built in. Flange, Flange bolts and flange gasket are attached
2014 9982 00	DN150	Lithium Battery is built in. Flange, Flange bolts and flange gasket are attached

Atmolysis Bag



AIRPIPE	L	D1	D2	D3
2014 1085 00	600	3/4 "Male Thread	1/2" Male Thread	1/2" Female Thread

• Special tools for installing AIRPIPE system

Tool Box



AIRPIPE	H	L	I
2009 0045 00	46	33	14

- Spanner 2009 1228 00X1,2009 4228 00X2 ,2009 5228 00X2
- Male thread spanner 2009 2128 00X1
- Water pump plier 2009 0028 00
- Hole deburrer 2009 0042 00
- Aluminum pipe cutter 2009 0040 00
- Aluminum pipe deburrer 2009 0141 00
- Drill holder 2009 0243 00
- Drill 2009 0043 00,2009 0143 00,2012 0343 00

- Marker 2009 0044 00
- L Key 6mm ,8mm
- One Marking Pen

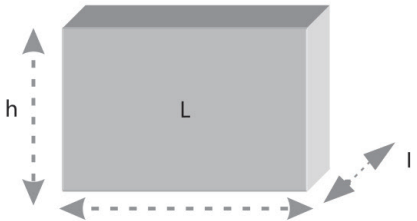
Tool Box



AIRPIPE	H	L	I
2009 0045 01	26	30	26

- Spanner 2009 1228 00X1,2012 4228 00X2 , 2012 5228 00X2
- Male thread spanner 2009 2128 00X1
- Aluminum pipe cutter 2009 0040 00
- Aluminum pipe deburrer 2009 0141 00
- Drill holder 2009 0243 00
- Drill 2009 0043 00,2009 0143 00

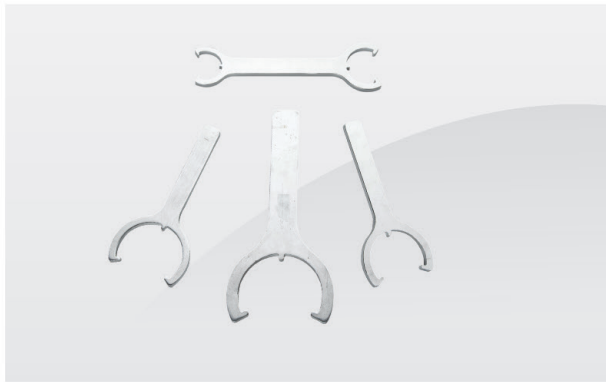
Sample Box



AIRPIPE	H	L	I
2009 0046 00	18.5	24	18

- *Aluminum Pipe DN25 :2009 2000 00
- *Aluminum Pipe DN40 :2009 4000 00
- *Aluminum Pipe DN80:2009 8000 00
- *Pipe to Pipe connector 8002:2009 8002 00
- *Pipe to Pipe connector 4002:2012 4002 00
- *Quick Drop 4210: 2009 4210 00
- *Socket Head Wrench 6mm: BS 02 14
- *Quick Plug Valve 2251:2012 2251 00

Spanner



AIRPIPE	L	Applicable diameter	Applicable connector
2009 1228 00	19	DN20-DN25	Aluminum
2009 4228 00	26	DN40	Aluminum
2009 5228 00	19	DN50	Aluminum

Male Thread Spanner



AIRPIPE	Applicable diameter	Applicable connector
2009 2128 00	DN20	Aluminum

Drill



AIRPIPE	L	D	Applicable diameter
2009 0043 00	50	14	DN25
2009 0143 00	50	19	DN40-DN200
2009 0343 00	50	25	DN63-DN200

*Before drilling, mount the quick drop reversely and mark. Drill to the reverse side of the quick drop at the speed of 650r/m. After drill, remove the burr and clean up.

Drill Holder



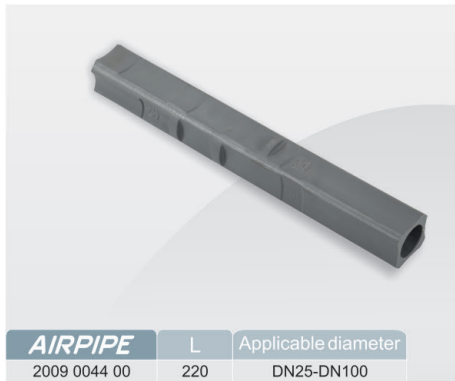
AIRPIPE	L	Applicable drill	Applicable diameter
2009 0243 00	110	14-30	DN25-DN80

Hole Deburrer



AIRPIPE	L	Applicable diameter
2009 0042 00	160	All

Marker



AIRPIPE	L	Applicable diameter
2009 0044 00	220	DN25-DN100

Water Pump Plier



AIRPIPE	Applicable diameter
2009 0028 00	DN20-DN80

Aluminum Pipe Deburrer



AIRPIPE	L	H	Applicable diameter
2009 0141 00	90	70	DN12-DN57

Aluminum Pipe Cutter



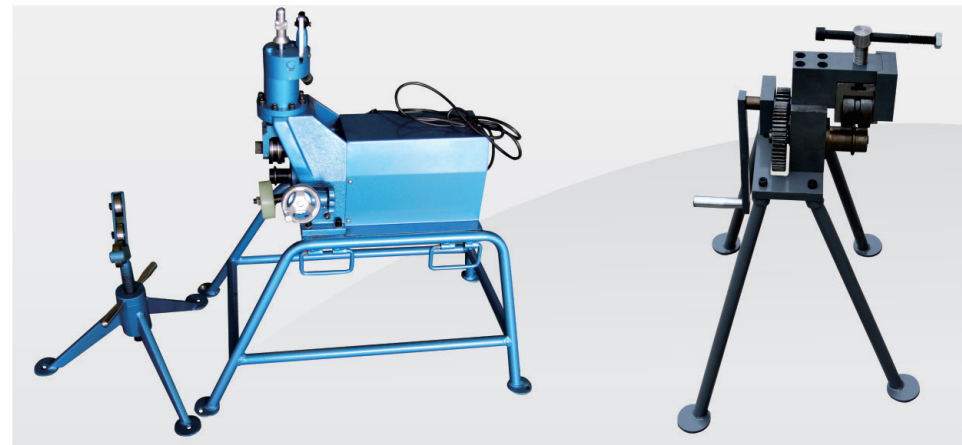
AIRPIPE	L	H	Applicable diameter
2009 0040 00	22	4	DN6-DN67
2009 0140 00	24	4	DN40-DN110

Pipe Cutter



AIRPIPE	Applicable diameter
2009 0244 00	DN63-DN200

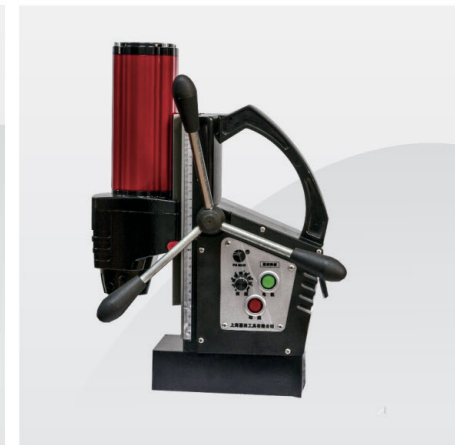
Pipe Lugging Machine



AIRPIPE	Applicable diameter
2014 0344 00	DN63-DN200

*Used for making the lug for DN63-DN200 pipe.

Magnetic Drill



AIRPIPE	Applicable diameter
2014 0644 00	DN63-DN200

*Used in Drilling in Steel Structure

Installation Instruction

AIRPIPE pipes and hoses

AIRPIPE pipes should be protected from mechanical shock, particularly if exposed to collision with fork-lift or when positioned in an environment with moving loads overhead. Meanwhile, rotation of the pipe and pipe supports should be avoided. The pipeline system can not be connected by welding. Regarding the AIRPIPE hose, please use as per the installation guidelines.

General

Prior to the installation of an AIRPIPE compressed air distribution system, the installer should ensure that the installation area complies with any regulations applicable to explosion hazardous (in particular the effect of static in well and warehouse). AIRPIPE should be installed downstream of the compressed air receiver or after the dryer. AIRPIPE hose can be installed at the very start of the system in order to eliminate any sources of vibration and facilitate maintenance and operations. Before repair or modify the AIRPIPE system, the relevant section should be pressure relieved and emptied. Installers should only use the AIRPIPE components and accessories, AIRPIPE pipe clips and fixture clamps in particular. The technical properties of the AIRPIPE components must be complied with what is described in the AIRPIPE catalogue.

Reasonable engineering practice for the optimization of an air pipe work system

- The work should be performed in accordance with the reasonable engineering practice in the process of installation.
- Bends cause the pressure drop.
- To avoid big pressure loss, use the hose or modular to offset the network for the purpose of bypassing the obstacles. Minimize the pipe diameter reduction.

- Keep a good quality of clean air with adequate filtration at the compressor outlet.
- The diameter of the pipe will influence the pressure drop and the operation the point-of-use equipment. Select the diameter according to the required flow rate and the acceptable pressure drop at the point of use. Never round the pipe system in order to facilitate maintenance or service.

Component assembly

AIRPIPE components are provided with assembly instructions for their correct use--simply follow the methods and recommendations stated in this document.

Commissioning the installation

Once the AIRPIPE installation has been installed and prior to the commissioning, the installer should complete all the test, inspection and compliance check as stated in the contract and according to reasonable engineering practice and current local regulations.

Expansion/Contraction

Expansion and contraction of the system can be automatically met with the correct installation. The designer and installer should calculate the elongation and shrinkage of each pipeline according to this installation guideline.

Situations to be avoided

Installation within a solid mass (concrete, foam, etc.). Especially underground. Exposure to chemicals those are incompatible with AIRPIPE components. Use AIRPIPE for earthing, or as a support for the electrical equipment. The hanging of any external device to AIRPIPE.

AIRPIPE meets all the above requirements

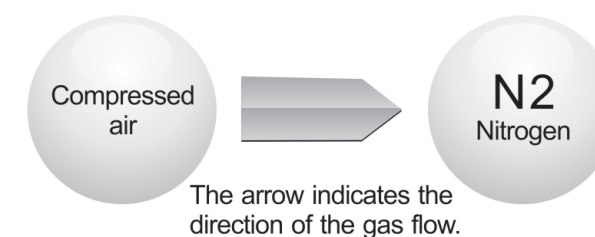
AIRPIPE Aluminum Pipe

General

- AIRPIPE aluminum pipe is supplied ready for use. No preparation is needed.
- Thanks to the rigidity of AIRPIPE aluminum pipe, the expansion and contraction, related temperature, are reduced to the minimum. As time goes by, the AIRPIPE network retains its straightness and hence its performance.
- Aluminum pipe is verified and fitted perfectly with its fittings. Each connection is automatically secured and the seal is optimized. The use of this pipe minimizes corrosion to the internal surface (self-protection of the pipe by the formation of alumina oxide).
- AIRPIPE aluminum pipe is available in 9 diameters: DN20, DN25, DN40, DN50, DN63, DN80, DN100, DN150 and DN200.
- AIRPIPE aluminum pipe from DN20-DN200 is especially designed for the primary and secondary network system for compressed air, vacuum and inert gas (nitrogen, argon).

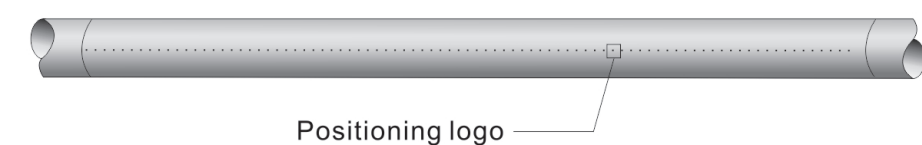
Identification

This identification can be done by sticking the adhesive labels directly to the pipe.



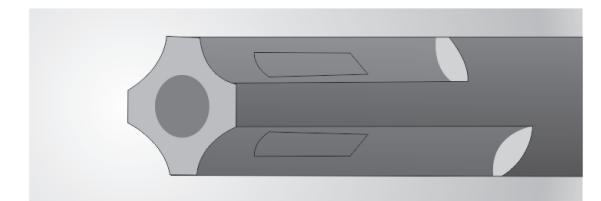
Drilling Indicator

There is one locator on each pipe. They can ensure the correct position during drilling more holes on the pipe.

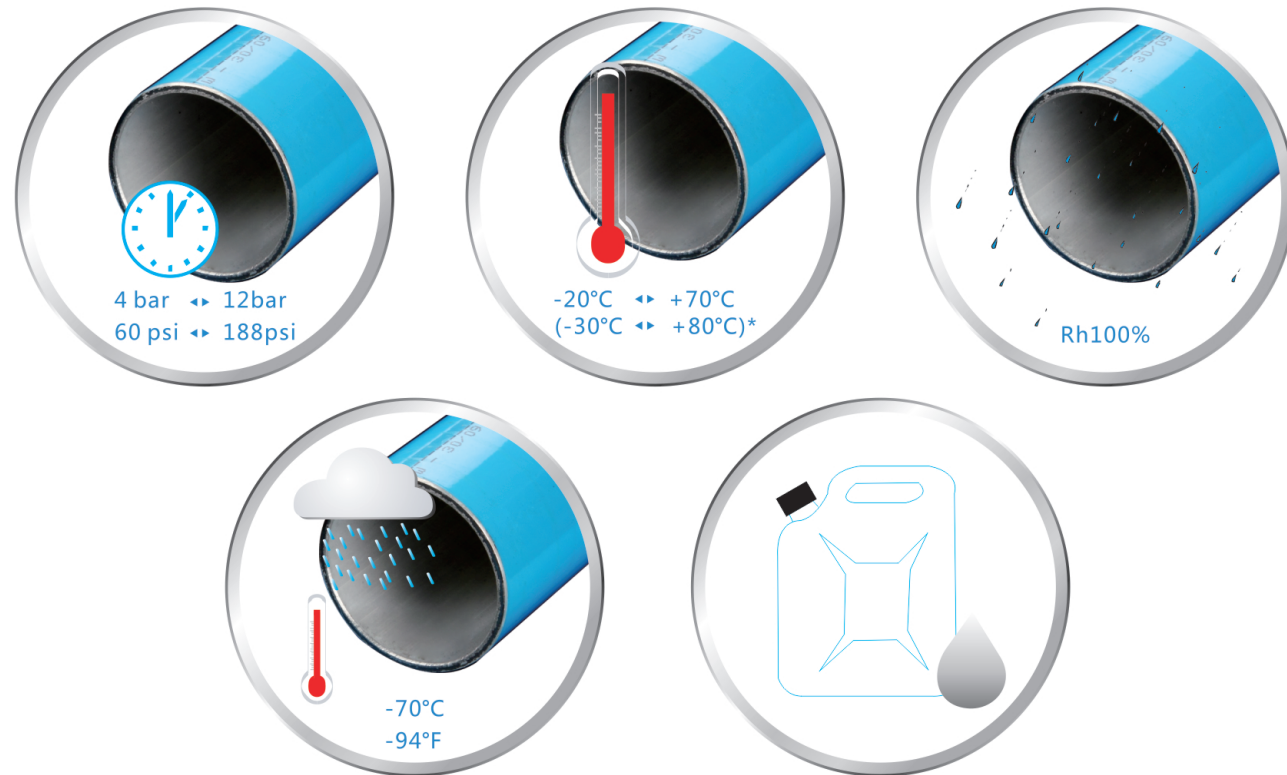


Connection Indicator

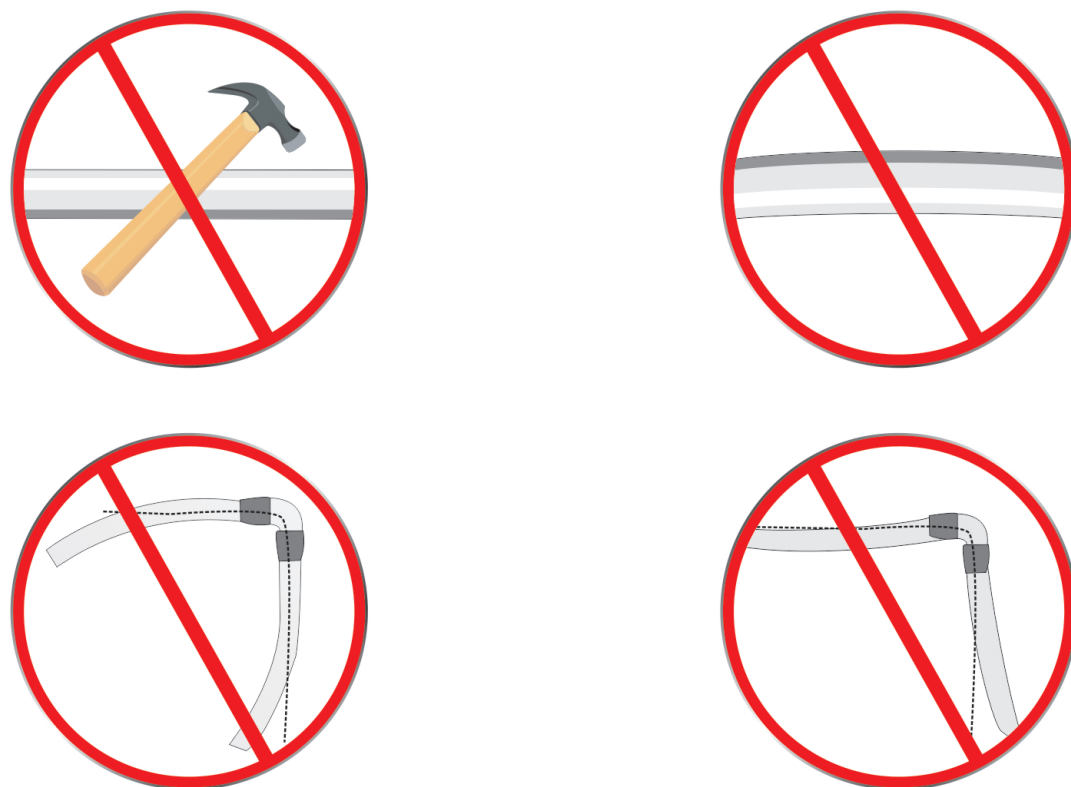
Prior to the installation, the different size of aluminum pipe (DN20 -DN50) need to be marked connection indicator on the surface of the pipe by special marker pen as a reference during connection.



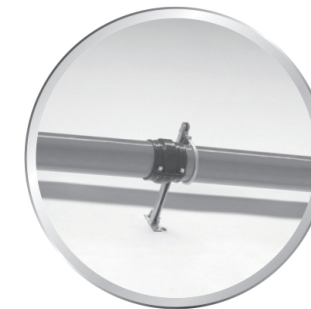
Suitable Range



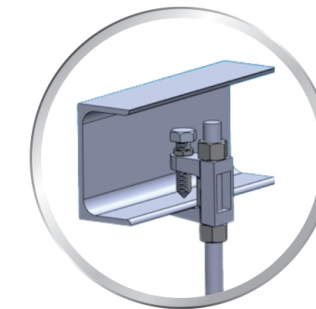
Following actions are not allowed during the installation of AIRPIPE aluminum pipe



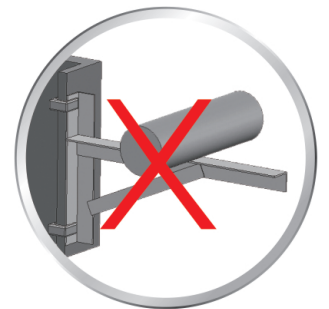
Fixing and supporting for AIRPIPE network



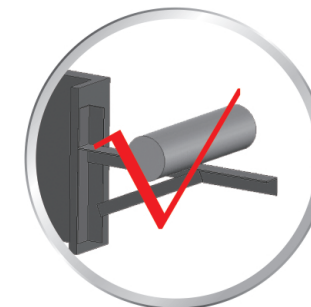
Iron expansion is needed when fixing the tube clip on the wall. All AIRPIPE tube clip are fixed with 8mm screw.



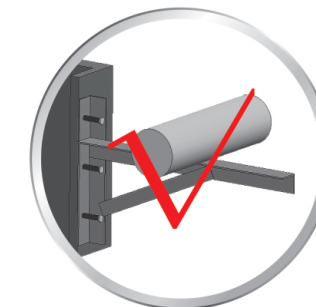
For small diameter (DN20-DN80), girder clamp (2009 0433 00) is used for the steel beam



For large diameter (DN100-DN200), girder clamp can not be used for the steel beam (Insufficient Rigidity)



For large diameter (DN100-DN200), welding could be used for the steel beam.



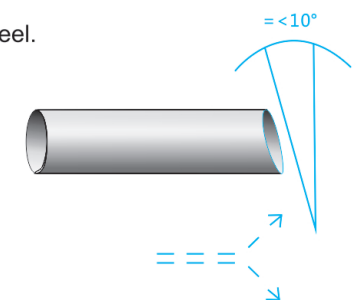
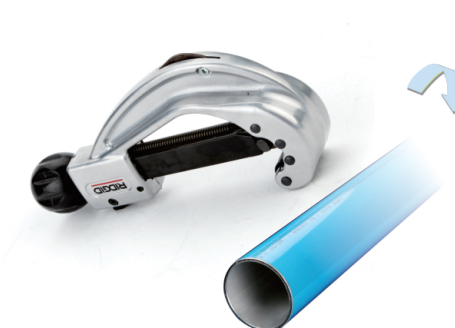
For large diameter (DN100-DN200), drilling could be used for the steel beam.



The cantilever bracket (2009 0032 00 and 2009 0132 00, the length of cantilever: 30 and 50cm) can be used when installation position is further away from the wall.

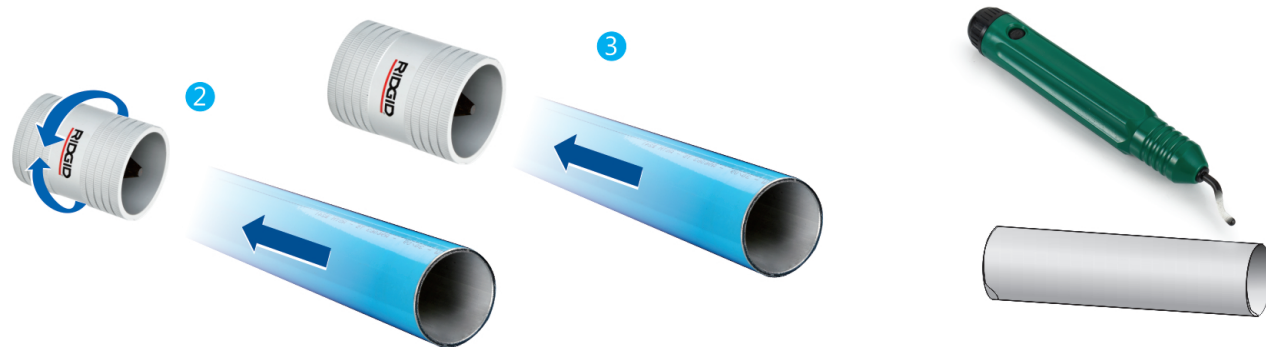
Cutting The Pipe

Rotate the corresponding pipe cutter around the pipe while gently tightening the wheel.



using the cutter 2009 0040 00 for DN20-DN63
using the cutter 2009 0140 00 for DN 40-DN100
using the cutter 2009 0240 00 for DN 63-DN200

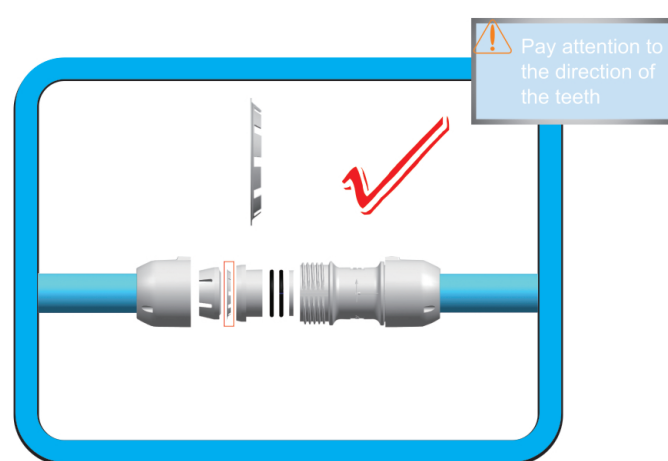
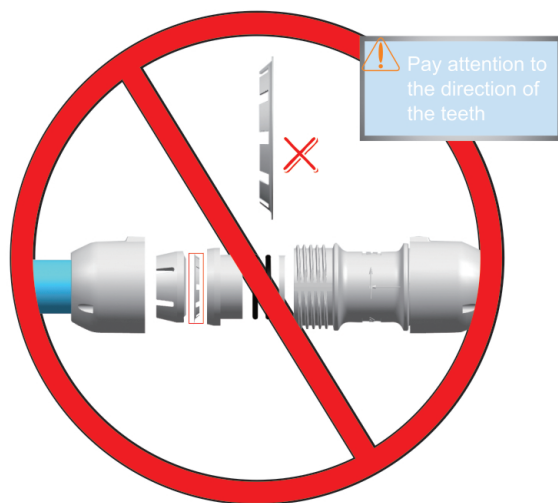
Deburring



Deburr with a deburring tool 2009 0141 00 for DN20-DN50

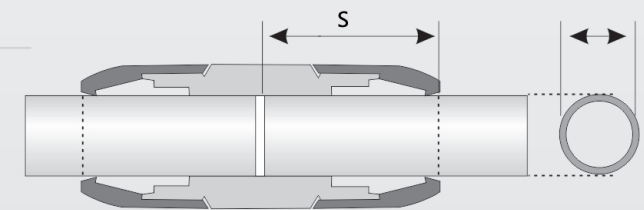
Deburr and remove any swarf with a deburring tool (2009 0042 00) and a file for diameter between DN63 to DN200.

Seal Kit



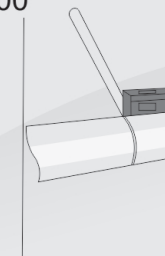
Pipe To Pipe Connectors

DN20-DN50

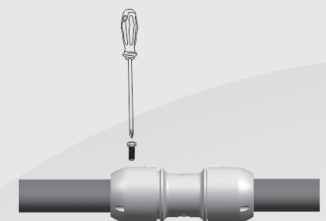


Suitable For All Connectors Installation

2009 0044 00

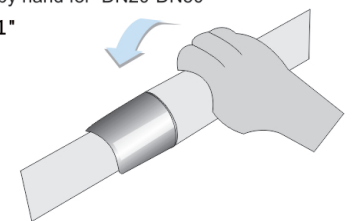


Mark the pipe at the desired position with a marker pen(2009 0044 00)

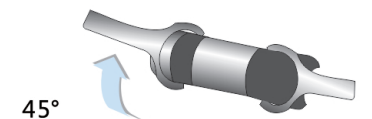


To prevent screw nut loosening, screw should be used to reinforce it.

A Tightening the pipe by hand for DN20-DN50
Ø20-25 mm/3/4"-1"



B Tightening the pipe with a spanner for DN40-DN100
Ø40 mm/1 1/2"
Ø50 mm/2"

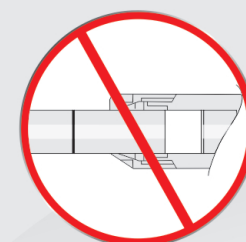


*Please be noted that there are two types of DN40/DN50 spanner.
Please use 2009 4028 00 for the polymer connector
while using 2009 5028 00 for the aluminum connector.

Diameter	S size(mm)	Diameter	S size(mm)
DN20	49	DN40	98
DN25	62	DN50	112

The size S is the length inserting the pipe into the connector. It should be ensured during installation.

Loosen the screw thread of the pipe to pipe connect and then insert pipe.

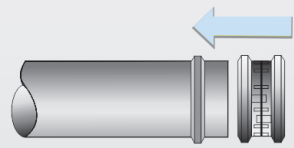


Make sure that the pipe position meets the requirement of AIRPIPE

DN100-200

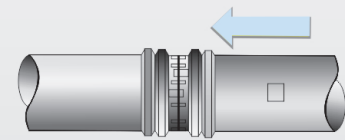
01

Slip the cartridge over the end of the first Pipe fully up to the shoulder.



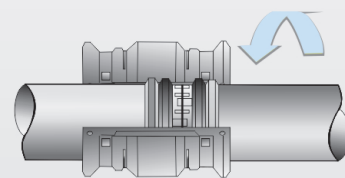
02

Bring the second pipe to the cartridge and slide fully up to the shoulder.



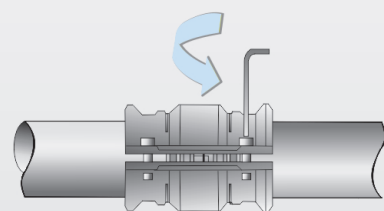
03

Position the clamp over the cartridge.



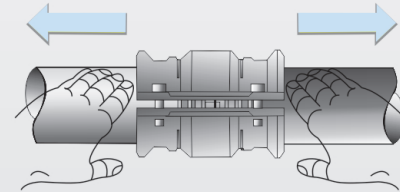
04

Tighten the pre-fitted screws with a screwdriver.



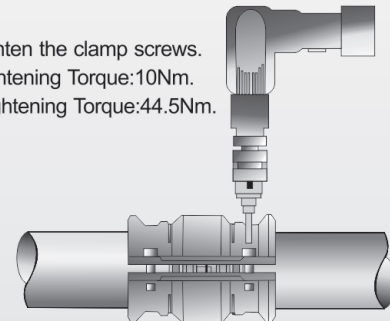
05

Pull the pipe fully back towards the outside of the clamp.



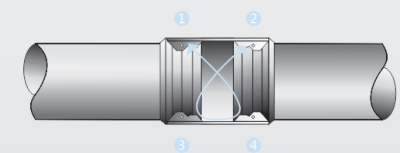
06

Fully tighten the clamp screws.
Min. Tightening Torque:10Nm.
Max. Tightening Torque:44.5Nm.



07

For effective clamp sealing, screwtightening should be performed on alternate sides of the clamp. To disconnect, perform the same operations in reverse order.

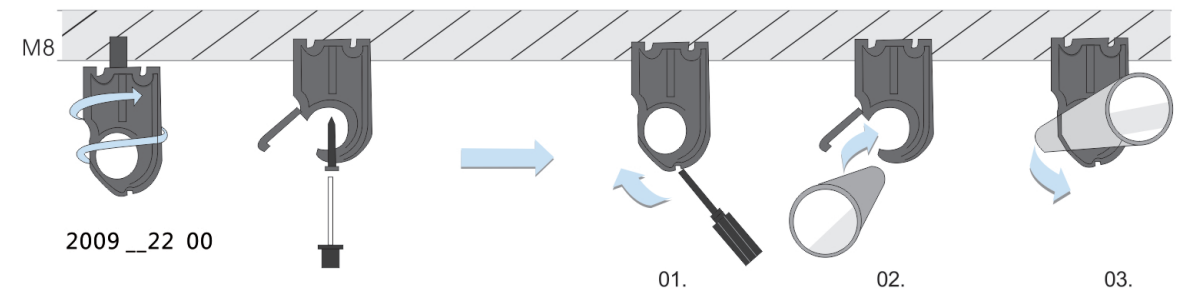


Note

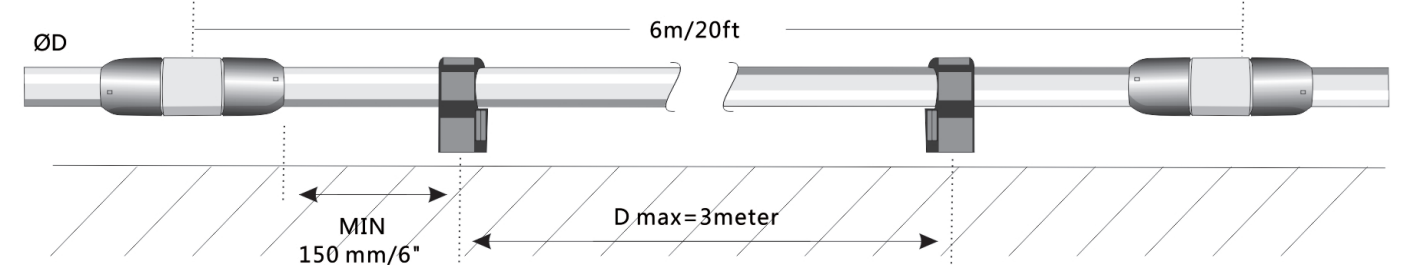


AIRPIPE	
The height of lug	2.5mm-3mm
The width of lug	less than 10mm
The distance between the centre line and pipe end	34.5mm

Fixing Clip



The fixing clip in AIRPIPE system is especially designed for AIRPIPE aluminum pipe. It can be used conveniently and adapts to expansion and contraction of AIRPIPE aluminum pipe so that it can ensure the system safety. The bolt size 8mm is suitable for all fixing clip.

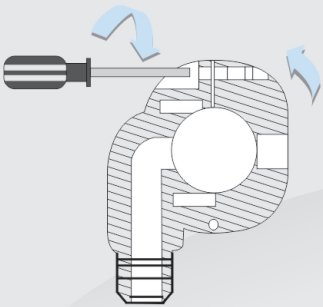


The fixing clips should be fitted at a distance of at least 150mm from a quick assembly bracket in order to allow for the expansion and contraction of aluminum pipe.

Ø	L(m)	D size(m)
20-25	6	3
40-50	6	4
63-200	6	5

Fixing Quick Drop

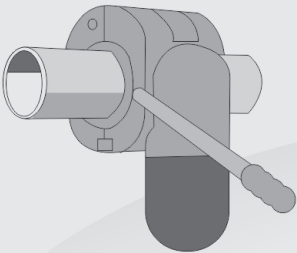
01



2009__10 00

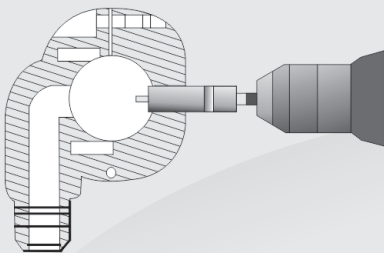
01.Put the quick drop at the desired position in opposite and tighten the nut.

02



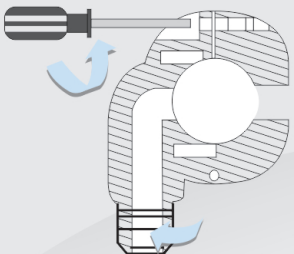
2.Make a mark at one side with marker pen.

03



3.Choose the suitable drilling tool and make a hole on the pipe in opposite of the quick drop.

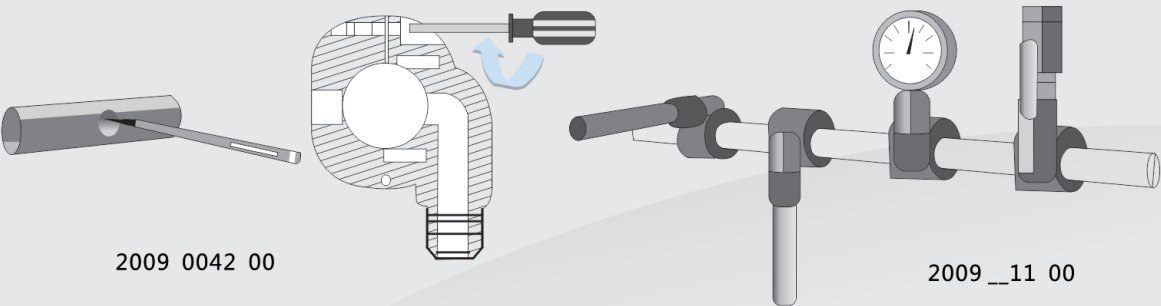
04



2009 0043 00 Ø14 mm/1/2
2009 0143 00 Ø19 mm/3/4
2009 0243 00 Ø25 mm/1/2

4.Loose the quick drop.

05

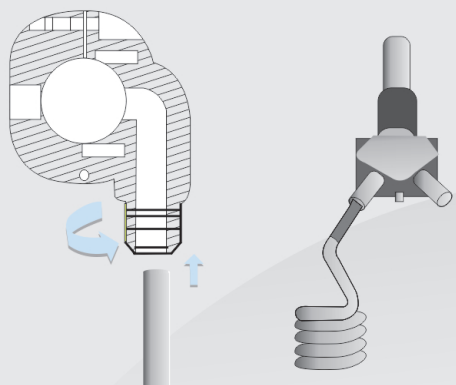


2009 0042 00

2009__11 00

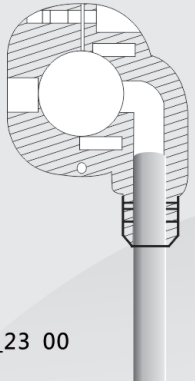
5.Deburr and remove any swarf, then position the quick drop using its location hole.

06



6.Loose the quick nut.

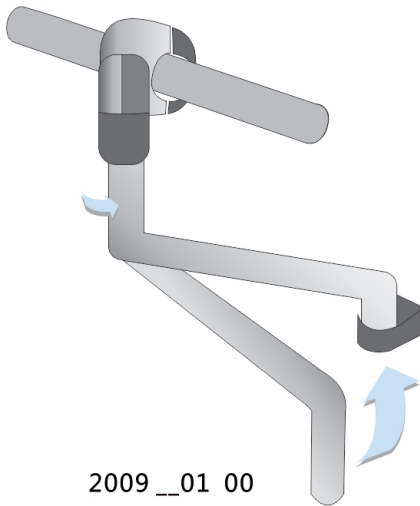
07



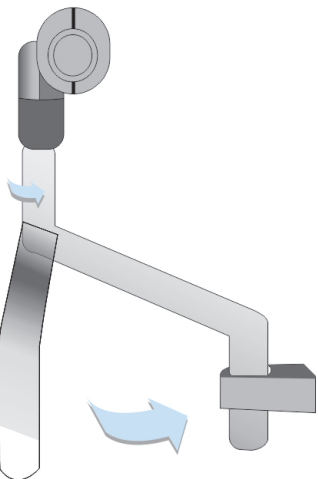
2009__23 00

7.Insert the branch pipe and tighten the nut.

S Bends

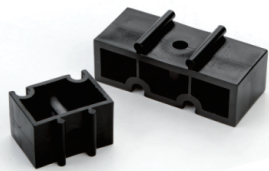
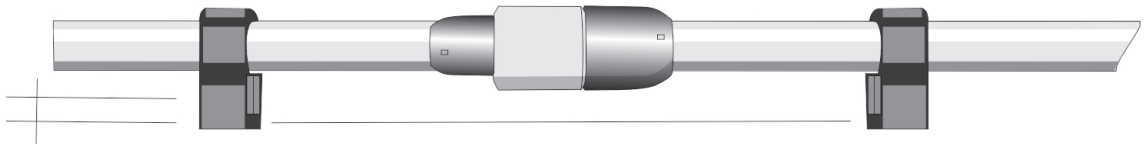


2009__01 00



S aluminum bend is especially designed for deferent situation. It can be conveniently connected to different branch pipe from main pipe.

Gasket For Pipe Clip



2009 0027 00
Ø20-25 mm/³/₄"-1"

2009 0127 00
Ø40-63 mm/1¹/₂"-2¹/₂"

The gasket can make different diameter pipe installed in one line. Also it can be conveniently connected to different branch pipe from main pipe.

Loop Piping Close

DN25-DN80 (Use Hose)



The quick connection mode for DN100/DN200 can be used conveniently in the close of the looping ring

Please consult us more for the usage instruction of the hose.

Compensation the effects of expansion or contraction due to variations in temperature

- 1) In order to compensate the effects of expansion or contraction due to variations in temperature, any fluctuations in the length of the AIRPIPE aluminum pipe network should be calculated.
- 2) .Expansion length per °C for one meter of AIRPIPE aluminum pipe is: 0.024mm
C= coefficient of expansion; L=straight length (meter; between the two fixed points);
Δ T=temperature variation between the installation temperature and the operation temperature(°C);
DL=Total expansion DL=CxLx Δ T
Consequences of the pipeline expansion or contraction caused by temperature variations:
2.1) The stress concentration of the pipe to pipe joints and elbows may cause air leakage or explosion even worse.
2.2) Obstacles
2.3) The drop lines may be endangered.

Eg: the diameter of the pipe is DN 63, and the length is 100m, the installation temperature is 15 degree, and the operating temperature is 45 degree DL=0.024x100x(45-15)=72mm

1	△ T	6 m D L	Allowable max. installation distance (meters)								
			DN20	DN25	DN40	DN50	DN63	DN80	DN100	DN150	DN200
2	20℃	2.88mm	The pipe can prolong itself	The pipe can prolong itself	120	120	115	115	95	80	75
3	25℃	3.60mm			115	115	110	110	90	75	70
4	30℃	4.32mm			111	110	100	100	85	70	65
5	35℃	5.04mm			100	100	90	90	80	65	60
6	40℃	5.76mm			90	90	85	85	75	60	55

